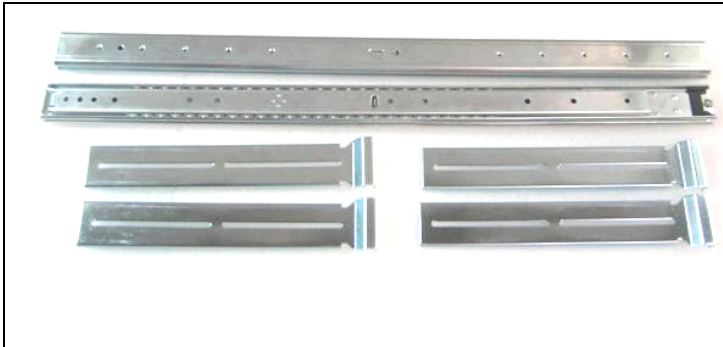




SLIDE RAIL INSTALLATION GUIDE

INSTRUCTIONS APPLIES TO: 08-6036-01B

REV. A



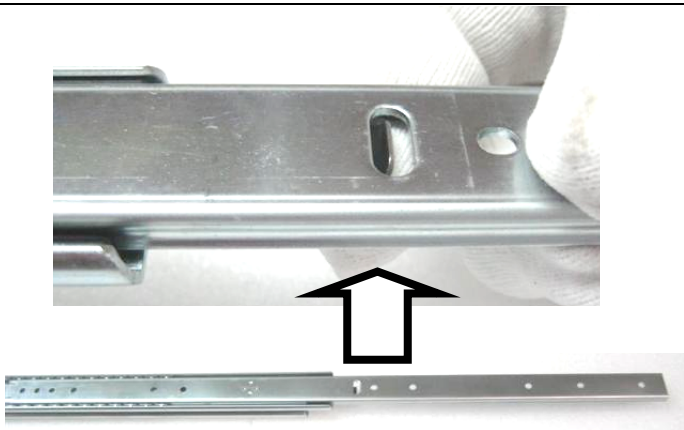
Slide rail kit is composed by four parts

- a. – Flange mount stationary section.
- b. – intermediate section
- c. – chassis section
- d. – Extension brackets.

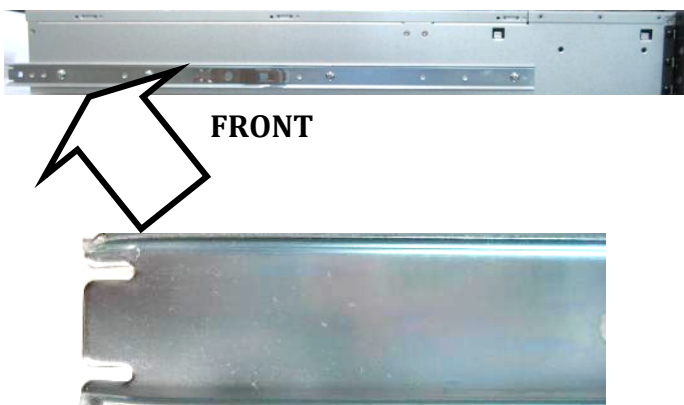


1) Accessories for the installation:

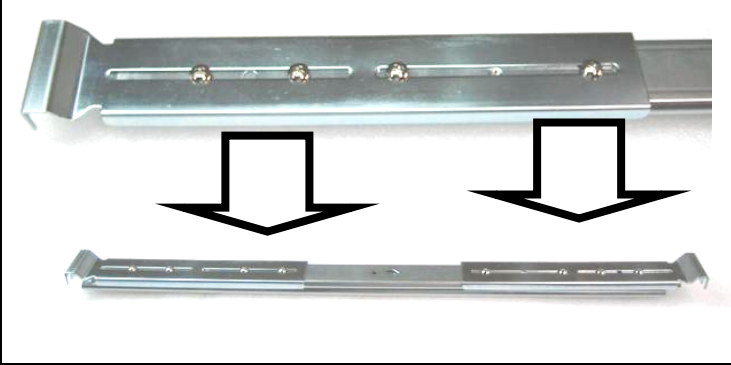
- a. – 16 x 10-32” round head screws.
- b. – 8 x 10-32” Hex nut
- c. – 8 x 8-32” Round head screws.



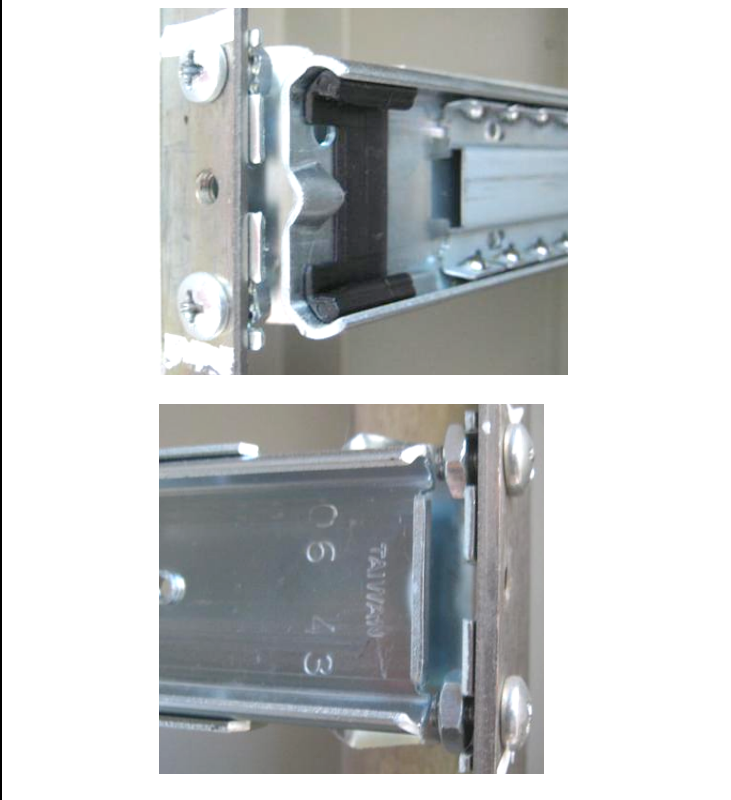
2) Remove CHASSIS SECTION; push lock to release part.



3) Install CHASSIS SECTION BRACKET to both chassis sides with 10-32” screws; slots to the rear side.



4) Install extension brackets to INTERMEDIATE SECTION with 4 x 8-32" screws to each side



5) Install FLANGE MOUNT STATIONARY SECTION to cabinet using 10-32" screws and hex nuts. Apply to front and rear sides.



6) Pull out INTERMEDIATE SECTIONS until hits retainer. .



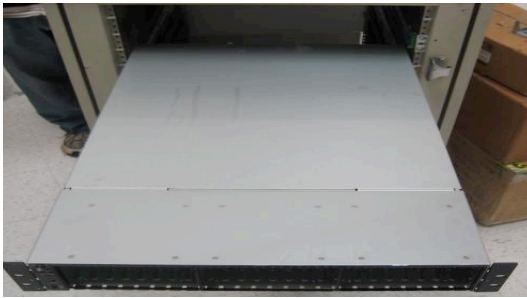
7) Slide in CHASSIS into INTERMEDIATE SECTIONS.



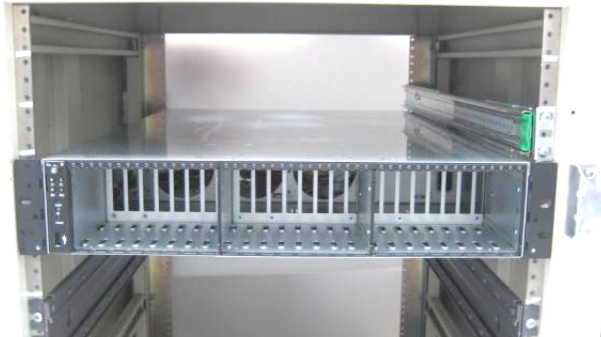
8) Push down lock to allow INTERMEDIATE SECTION rail into FLANGE MOUNT STATIONARY SECTION.



9) Push down TAB on both sides to allow chassis installation.



10) Carefully slide bracket pressing lock button to allow CHASSIS SECTION insertion.



11) Push chassis all the way in.