

LSI Logic Discrete Cable Installation

15-4120-01B

Introduction

The following instructions will guide the user in setting and installing the necessary cables to enable the fail LED capabilities of the LSI Logic 84016E card in conjunction with the 12-6426-01 backplanes in a 3U chassis.

If you use Seagate HDD, please refer to Instruction Manual 15-4120-02A.

Required Materials:

1. 05-3221-02A (Qty: 2 per 3U)



Instructions for installing the discrete fail LED cable

The board layout of the 84016E SAS controller card is shown in [Figure 1](#) with the fault headers highlighted.

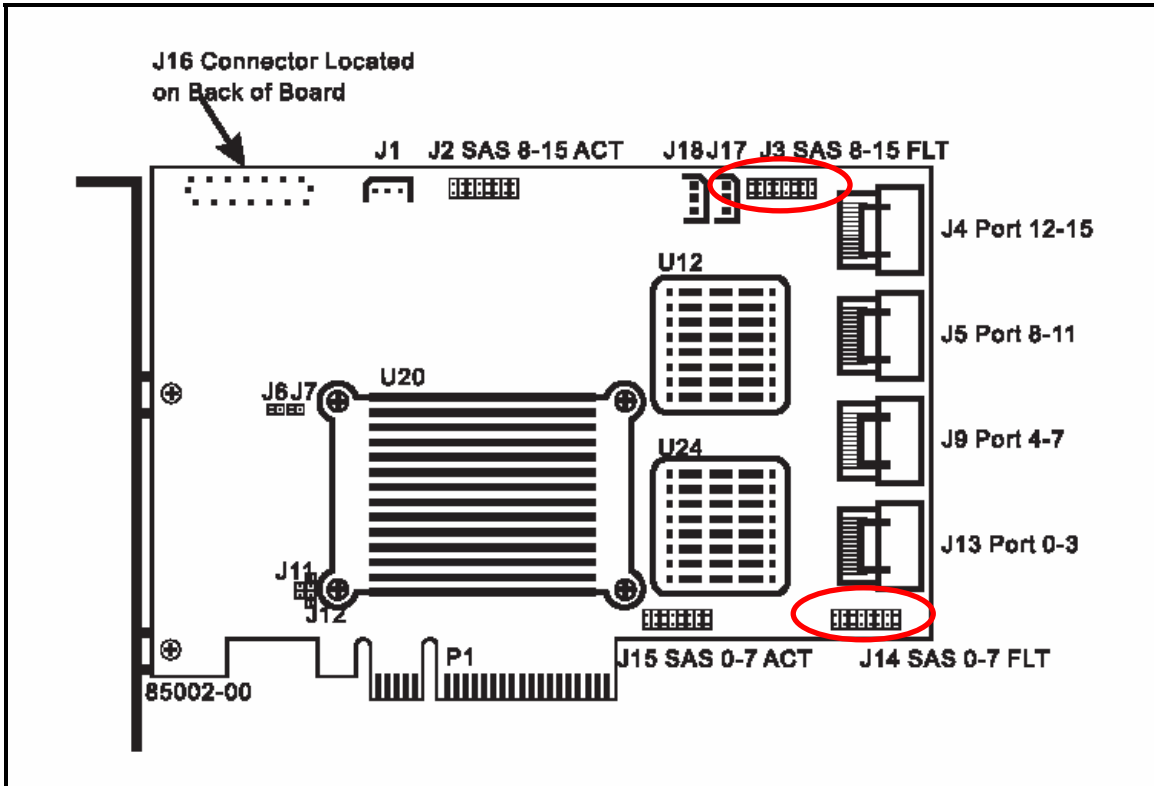


Figure 1 LSI Logic MegaRAID SAS 84016E board layout

1. Connect the 16-pin connector end labeled “F0-F7” of the cable to the 16-pin Fail LED Header **J14** on the LSI Logic card ensuring that the two brown wires are connected to the anode pins of the header, while the other wires are connected to the cathode pins.
2. Connect the 5-pin connector with the label that includes “F0-F3” to the backplane that is connected to the MiniSAS connector **J13** on the controller card through pins 2, 4, 6, 8 and 10 on **J6** on the backplane. Ensure that the brown wire is connected to pin 10 of **J6**. See [Figure 2](#).

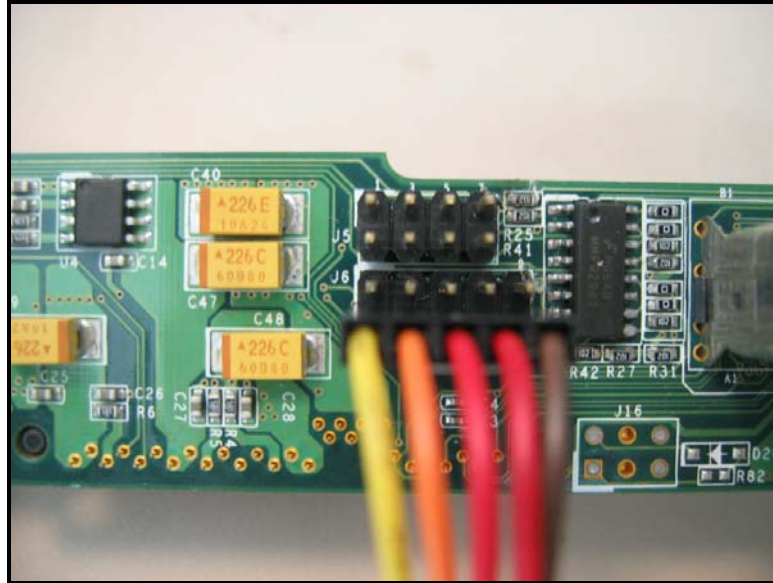


Figure 2 Connection to backplane

3. Connect the 5-pin connector with the label that includes “**F4-F7**” to the backplane that is connected to the MiniSAS connector **J9** on the controller card through pins 2, 4, 6, 8 and 10 on **J6** on the backplane. Ensure that the brown wire is connected to pin 10. See [Figure 2](#).
4. Using the second cable, connect the 16-pin connector end labeled “**F8-F15**” of the cable to the 16-pin Fail LED Header **J3** on the LSI Logic card ensuring that the two brown wires are connected to the anode pins of the header, while the other wires are connected to the cathode pins.
5. Connect the 5-pin connector with the label that includes “**F8-F11**” to the backplane that is connected to the MiniSAS connector **J5** on the controller card through pins 2, 4, 6, 8 and 10 on **J6** on the backplane. Ensure that the brown wire is connected to pin 10. See [Figure 2](#).
6. Connect the 5-pin connector with the label that includes “**F12-F15**” to the backplane that is connected to the MiniSAS connector **J4** on the controller card through pins 2, 4, 6, 8 and 10 on **J6** on the backplane. Ensure that the brown wire is connected to pin 10. See [Figure 2](#).